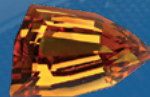


# SAPPHIRE GEMFIELDS

EXPL<sup>📍</sup>ORE MORE



**CENTRAL  
QUEENSLAND**  
HIGHLANDS





# Welcome to the SAPPHIRE GEMFIELDS



There are some destinations whose attractions all sit on the surface, are easy to see, and predictable. Then there are others that are more subtle, sparking your curiosity and nudging you quietly to explore more.

The Sapphire Gemfields is the latter. An area of Central Queensland Highlands that contains over 900 square kilometres of Sapphire bearing ground. This is one of the largest and best quality Sapphire fields in the world and takes in the townships of Anakie, Sapphire, Rubyvale and The Willows. The Sapphire Gemfields sits at the centre of two completely different worlds – The Southern Great Barrier Reef and Outback Queensland.

To find it, head inland from Rockhampton, or head east from Longreach along the Capricorn Highway, or if travelling north to south along the Great Inland Way, it is 42 kilometres west of Emerald. The Sapphire Gemfields can also be accessed from the north along fully sealed scenic roads via Capella and Clermont. All roads are an easy and pleasant drive, allowing you to explore more of the region.



## LEGEND

Unsealed Road	---
STRATEGIC TOURING ROUTES	
Australia's Country Way	—
Capricorn Highway	—
Great Inland Way	—
Leichhardt Hwy & Newell Hwy	—
Matilda Hwy & Kidman Way	—
Overlander's Way	—
Pacific Coast Touring Route	—
Savannah Way	—
Warrego Highway	—

# GEM FEVER

Exploring the Sapphire Gemfields may cover many activities, fossicking, tours, underground mines or doing your own thing wandering the Sapphire Wetlands or enjoying sunrises and sunsets from Policeman's Knob. A great place for bike riding or being the captain of your own adventure on one of the many drive trails.

Step into another world on an underground mine tour and see how the pioneers mined for sapphires and understand how the locals do it today.

- Treat yourself with a piece of Australian mined sapphire jewellery to suit the thickness of all wallets from one of the many gem and jewellery shops.
- Get in touch with nature and check out the wildlife (not just the locals) as you walk through 14 hectares of bushland and seasonal, freshwater wetlands at the Sapphire Wetland Reserve. Spot rare rock wallabies up on Policeman's Knob whilst enjoying sunrise or sunset. Be sure to pack a picnic.
- Follow the Sapphire Gemfields Treasure Trail stopping at interpretive panels and place markers to learn about the characters of the region.

## Three ways to fossick:

- 1 Visit a fossicking park where the digging work is already done.
- 2 Take a tag along fossicking tour and let an experienced miner guide you.
- 3 Buy a permit, hire the equipment and head to one of the designated fossicking areas.

## Get down to earth

There are very few gemfields anywhere in the world that allow visitors to come dig and fossick for their own gemstone.

However, the Sapphire Gemfields does, and welcomes everyone to come and try their luck.

Come empty handed and leave with precious memories, and, if you are very lucky, a precious sapphire.



*The thrill of finding a genuine sapphire is a lifelong memory... the Gemfields is an experience like no other.*





# A little bit of HISTORY

Sapphires were first reported in the Sapphire Gemfields by John Archibald Richardson in the 1870s. By 1890 commercial mining had begun in Retreat Creek in the present town of Sapphire. It was incredibly hard work in an isolated spot in harsh conditions with a lack of water.



Mines were dug by hand using picks and shovels in open pits or trenches. The early miners also dug square-sided shafts, which they climbed with their backs braced against the walls. In the earlier days the main buyers were Germans, Russians and other European nationals.

After World War II, the Sapphire Fields went into a decline until the 1960s when a new phase began with tourists and recreational mining and fossicking becoming popular.

By 1970, increasing prices for rough sapphires led to large scale mechanised mining, which resulted in increasing amounts of sapphires produced by a large number of miners and purchased by buyers from Thailand. During this period Australia produced over 80% of the world's sapphires.

High production continued until the early 1980s when an increase in production from Asia and Africa led to a massive downturn in the Australian Sapphire Market which continues today.

An active tourist industry was established in the early 80s and separate areas were set aside for fossicking, hand mining and large-scale machinery mining.



## And NOW

*Today the lifestyle of the Sapphire Fields is very laid back and peaceful and has become a drawcard to many people with visitors always welcome.*

Anakie township provides important services of police and a school and is situated next to the Capricorn Highway and railway station. No sapphires are found here but Anakie is known as the Gateway to the Sapphire Gemfields and is close to the Glenalva Fossicking Area. North of Anakie are the towns of Rubyvale and Sapphire. These two charismatic towns are the commercial centres of the Sapphire Gemfields and hold the richest deposits of sapphires in the area. A network of unsealed roads and bush tracks connect the various mining and fossicking locations with names like Big Bessie, Poverty Hill, Graves Hill, Washpool, Reward and Goanna Flats to name a few.

Around Rubyvale and Sapphire there are many unusual and unlikely buildings which have

become important tourist features. The houses and architecture are unique to this area where billy boulder and bush timber dwellings (just like the original pioneers) are not an uncommon sight.

Everything from a Roman castle and a bottle house to bush humpies and shacks. Many hours can be enjoyed just driving around and viewing these unique buildings and creations.

The Willows Gemfields is a popular spot for fossicking, specking and a quiet bush life. Some of the world's most famous sapphires have been found here.

Many changes have come to pass in the Gemfields communities but the one thing that has stood firm is the locals' (called "Gemmies") warm hand of welcome extended to all visitors.



# Explore more of the SAPPHIRE GEMFIELDS

**GEMFIELDS EVENTS! Stay Play Explore.** Festivals are a wonderful chance for towns and cities across the world to showcase who they are, whilst inviting visitors from near and far to come and be a part of the fun. The Sapphire Gemfields event calendar has been reimagined and now features three festivals from May through to October ('the tourist season').

**GEMFIELDS ROCKS! May Long Weekend.** The name of this festival is a cheeky play on words. Rock music and beautiful rocks (sapphires) are a match made in heaven, especially when you incorporate old time rock 'n' roll with contemporary rock music and classic cars, Tag-along fossicking tours, Q & A sessions, line dancing, mining displays, roving entertainers, kids activities, great food, and a whole lot of madness 'n' mayhem thrown in for good measure.

Add to this, the local businesses roll out their very own welcome mats and entice you in with a wide array of entertainment and showcases across the weekend. You will see and experience so much more than you ever thought possible!!

**GEMFIELDS FESTIVAL 2nd week & weekend of August.** The tourist season is in full swing and it's time to celebrate this crazy little thing called life!!

Across our four fabulous townships you get to see our little piece of paradise in all its glory, with more gem showcases than you can poke a stick at at the big four day markets extravaganza featuring local, interstate, and international traders along with our very own, ever-popular Lapidary Club displays and demonstrations.

There are talks, and walks, and demonstrations of all kinds across the entire week that you can immerse yourself in, and then of course you will want to be entertained... The jam-packed program features the superb Wine and Cheese Night, as well as the Saturday Night Spectacular and a whole lot more.

Visitors are always blown away by how good they feel having spent some quality time with us here in the Central Queensland Highlands.

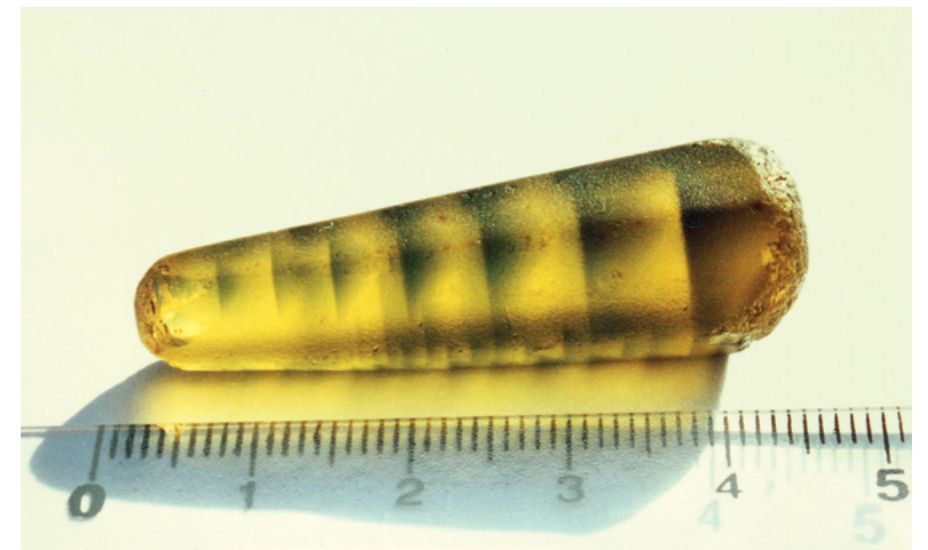
**GEMFIELDS MARDI GRAS.** What started as a birthday celebration in 2018, the Mardi Gras is now an entrenched part of the Gemfields' party landscape. With fun, diversity, and inclusivity at its core, this festival includes the ludicrously entertaining 'Blingo' (Drag Queen Bingo) on the Friday night, and then the Mardi Gras on Saturday which includes a fabulous Dinner Show & Live Entertainment of the gorgeous variety!!

FOR MORE INFORMATION go to [gemfieldsevents.com.au](http://gemfieldsevents.com.au)



• Gem of the soul  
• Precious  
• Valuable

## FAMOUS Sapphires



*Tomahawk Tiger (82.4cts), the finest multi-coloured sapphire crystal found. Still owned locally.*

Many famous Sapphires have been found on these Sapphire Gemfields.

The "Pride of Queensland" is the largest cut yellow sapphire in the world at 169 carats and is owned by a private collector in the USA.

A large Blue Black Sapphire known as the "Black Star of Queensland" was recently offered for sale for \$90 million. The gem was found in 1938 by 12-year-old Roy Spencer. The palm sized stone weighed an incredible 1,156 carats and spent the next nine years languishing as a doorstep in the Spencer family home.

Equally well known are four very large and special sapphires carved as American Presidents' heads and weighing more than 1,700 carats each. These incredible gems are on display at the Smithsonian in Washington DC, USA.

In the year 2000 a tourist found an impressive sapphire weighing 200 carats and named it "The Millennium Sapphire". The tourist describes the finding of the gem to the local newspaper and said, "It was easy – it was just lying there!" The owner then placed the sapphire for tender at the annual Gemfest the following week where it was snapped up for \$85,000.

In stark contrast is the story of the "Autumn Glory", a magnificent Orange Sapphire found by a fossicker in 1993. He was offered \$30,000 the first day he found it, and within a short time the offers extended to \$100,000. But the owner wanted more and sent it off overseas where it was expected to fetch a much higher price.

Sadly, the Sapphire "disappeared", and the fossicker's dream of riches was lost.



### ANAKIE GEMFIELDS CARAVAN PARK

The Gem of the West

- Shady camping sites + ensuite cabins & budget cabins
- Powered & unpowered sites
- Kiosk, gas
- Fossicking on site
- Pet friendly

P 07 4985 4142

E [anakievanpark@bigpond.com](mailto:anakievanpark@bigpond.com)  
7 Richardson St, Anakie



### RUBYVALE GEM GALLERY

*Mining sapphires since 1974*

- Sapphires
- Jewellery
- Accommodation



*Established 1988*

The most outstanding collection of sapphires and designer jewellery.

SHARING OUR SAPPHIRE STORY

Main Street, Rubyvale 4702  
p: 07 49 854 388

e: [admin@rubyvalegemgallery.com](mailto:admin@rubyvalegemgallery.com)  
[www.rubyvalegemgallery.com](http://www.rubyvalegemgallery.com)





# The MINERS COMMON

The area around Rubyvale and Sapphire is the "heart and soul" of the Gemfields and defines the character and attitude of the gem miner...

## The "heart and soul" of the Gemfields

The Miners Common is an 11,000 acre property that contains the towns of Rubyvale and Sapphire (6km apart). The two towns were settled due to the main sapphire diggings being along Retreat Creek at Sapphire town and Policemans Creek at Rubyvale.

The Miners Common is integral to the unique character of the Gemfields. The property was created in the 1890s and within the boundaries the miner was able to mine, build a dwelling and run a few livestock. The Miners Common is the last of such titles remaining in Queensland. Potential miners are still able to access these rules and build a dwelling but current law does not allow permanent dwellings on mining claims. This has given rise to the architecture and building "code" of the Fields.

Besides the homemade do-it-yourself dwellings unique to this area, animals roam freely on the common. Cattle, horses and camels feed throughout the area and it is not an unusual sight to spot cattle settled on the bitumen outside the pub or wandering the streets. Kangaroos, wallabies and birdlife also cover the area due to the many dams and open cuts left from mining affording year round supplies of water.



## Attractions & ACTIVITIES

**Underground Mine Tours** operate daily at Rubyvale. A must-do for an insight into the world of an underground gem miner.

**Gems and Jewellery Shops** featuring Sapphires of all colours and sizes, investment stones to gift stones and specimens. Raw sapphires (rough), cut and stunning jewellery pieces.

**Jewellers and Gem Cutters** – Gem cutters for all your faceting and polishing needs, and Jewellers to set or remodel. Jewellery and gem cutting course available to the public during the year.

**Fossicking Parks** – Privately owned fossicking parks where you pay to sieve the gravels and keep what you find. Learn to flip a sieve and you're sure to find some sapphires and zircons – it's great fun and educational too!

**Cafés/Coffee Shops/Hotel** – Relax and enjoy strudels, Devonshire teas, meals and takeaways in Rubyvale and Sapphire. Enjoy an ice cold beer and meal at Rubyvale and Sapphire.

**Fossicking** – Fun for all ages. Take a Tag-along Fossicking Tour into the bush following in your vehicle, with all gear supplied. Operated daily for that "Out in the field's experience".

**Observatory** – Dark sky viewing operates on many nights.

**Camping** is allowed in the Fossicking Areas. Permits available online only.

**The Locals** – Meet the friendly locals and characters called "Gemmys".

**Miners Common Museum** – Remnant mining and mining displays. Barbeques and toilet facilities available to the public.

**4WD Driving Tracks** everywhere! Try a day out to Tomahawk Creek Fossicking area with 2,500 acres of 4WD tracks. Outback survival knowledge recommended.

**Bush Walking** – The Sapphire Wetlands is an area of 14 hectares situated behind the Kangoulu Park in Sapphire and is home to the endangered Fairy Shrimp.

**Specking** – The art of walking around bent over, looking for Sapphires on the ground. Popular after the rain – "The Emu Walk".

**Exploring and Prospecting** – Large areas to explore and experience the different terrains.

**Mining** – Commercial mining is ongoing with underground and open cut. Viewing at some mines is possible.

**The bush, wildlife and birds** – Enjoy the genuine bush lifestyle in an easy going, relaxed and safe area. Huge variety of birdlife, kangaroos and wallabies. Freedom and peace in the bush.

**Markets** are held on Sundays at Sapphire Football Grounds, and at Rubyvale on Saturdays, April to October.



### COOLAMON MINING SAPPHIRE SHOWCASE

Coolamon Mining has been mining sapphires for 40 years, and supplying the jewellery trade for 25 years. Our fine cut natural sapphires and zircons are now available to the public through our Coolamon Mining Sapphire Showcase. Come in and browse. OPEN DAILY 10AM – 3PM

M 0407 881 551  
E coolamon.showcase@yahoo.com  
1052 Rubyvale Rd, Sapphire  
FB: Coolamon Mining Sapphires

## PAT'S SAPPHIRE CENTRAL



'Heart of the Gemfields Community,' Pats has been in business for 43 years.

- The original bucket Sapphire Wash – do here or takeaway bags.
- Gem shop has plenty of jewellery set with gold or silver, plus local sapphires or semi-precious gems, rocks, and crystals.
- Fully licensed cafe open every day for breakfast, lunch and morning and afternoon tea.
- Open at night during the season from April – September.
- Easy visitor parking for caravans.
- Open 7 days a week.

P 07 4985 4544  
E info@patsapphirecentral.com.au  
1056 Rubyvale Rd, Sapphire  
Patsapphirecentral.com.au

## ULTIMATE GEMFIELDS EXPERIENCE



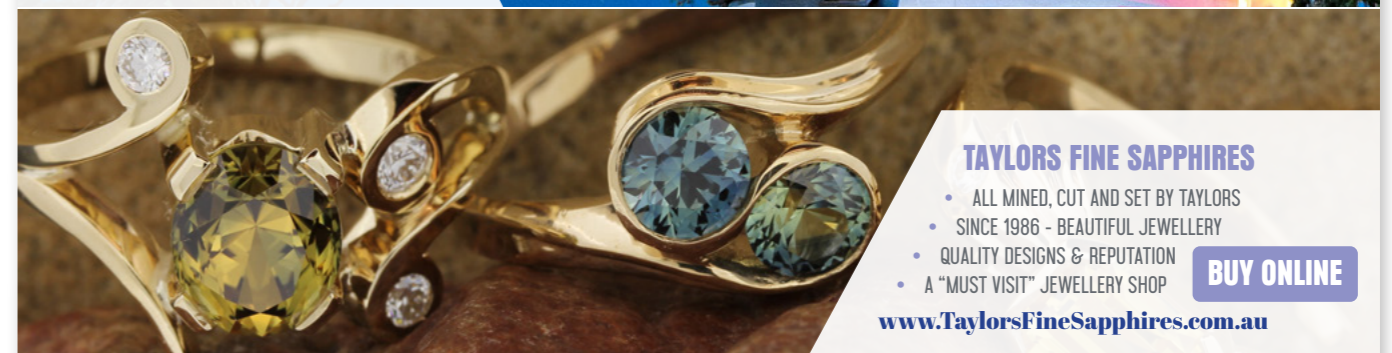
### RUBYVALE MOTEL AND HOLIDAY UNITS

- AN ADULT GETAWAY – AWARD WINNING
  - SUPERB COMFORT & EXPERIENCE
  - PRIVATE & RELAXED BUSHLAND SETTING
  - VERANDAHS, BBQ HUT – WALLABIES VISIT TOO
- 0459 692 313  
BOOK NOW  
www.RubyvaleMotel.com.au

"Gems by Day, Jewels by Night"

### RUBYVALE OBSERVATORY

- DISCOVER THE UNIVERSE
- SPEND A NIGHT WITH THE STARS
- A FUN INTRODUCTION TO ASTRONOMY
- HIGHLY RECOMMENDED FOR SMALL GROUPS
- PLANETS, STARS, CONSTELLATIONS AND NEBULA



### TAYLORS FINE SAPPHIRES

- ALL MINED, CUT AND SET BY TAYLORS
  - SINCE 1986 - BEAUTIFUL JEWELLERY
  - QUALITY DESIGNS & REPUTATION
  - A "MUST VISIT" JEWELLERY SHOP
- BUY ONLINE  
www.TaylorsFineSapphires.com.au

## ALL IN ONE GREAT LOCATION

35 HERITAGE RD RUBYVALE 4702 | 0459 692 313 | RUBYVALEHOLIDAY@BIGPOND.COM





# FOSSICKING

The Queensland Government has set aside large areas of sapphire-bearing grounds for recreational fossicking with no commercial mining allowed.

## Willows Designated Fossicking Land (Willows)

The Willows Gemfields is located about 38km west of Anakie. Sapphires found here are mostly yellows and greens. The occurrence of gems is in shallow wash with the favourite spots reasonably close to town.

## Big Bessie Fossicking Area (Sapphire)

Big Bessie is a small area which lies within the Sapphire Designated Fossicking Land. Sapphire-bearing shallow wash covers most of the area and it has been extensively worked, but there are still patches of undisturbed ground which is likely to contain sapphires.

## Glenalva Fossicking Area (Anakie)

Glenalva is about 20km southwest of Anakie. A wide variety of coloured sapphires can be found in the shallow wash which covers most of this area.

## Middle Ridge Fossicking Area (Rubyvale)

Middle Ridge is a small fossicking area (32ha) located between the Designated Fossicking Lands of Divide and Rubyvale. Sapphire and zircon gems can be found in the mostly shallow wash of this area.

## Tomahawk Creek Fossicking Area (Rubyvale)

Although located on the Central Queensland Gemfields, Tomahawk Creek is more remote, 45km northwest of Rubyvale. Blue and “fancy” coloured sapphires have

been found in the generally shallow wash which may be of many different types. The Tomahawk Tiger was found here.

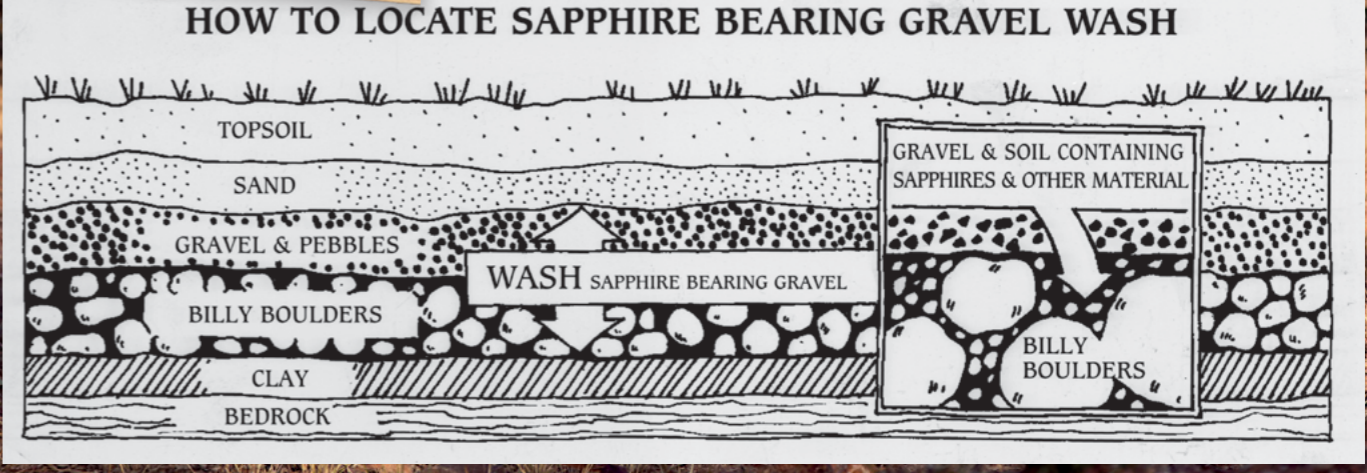
## Graves Hill Fossicking Area (Sapphire)

Graves Hill is popular because of its proximity to Sapphire township and its shallow wash. All colours have been found here and is well worth a try.

*Stub your toe on a sapphire.*



- Healthy, fun and rewarding
- Unique experience
- Rare opportunity



## GEM FEVER

Fossicking is offered in many ways. A fun and easy way is to set your sights on a Fossicking Park. Here miners have dug the dirt and you pay to sieve and keep any sapphires and zircons you find. Learn the art of “flipping a sieve” and be shown how to recognise sapphires and zircons.

Another way is to take a tag-along fossicking tour which will take you out into the bush where you will do all the fossicking work to recover your gems.

They supply a guide and all the tools and equipment allowed to achieve your quest for glory.

For the more adventurous (who have more than a day) you can do your own thing in one of the five fossicking areas. A fossicking licence is required (obtained online only). The inexpensive licence provides all the rules, responsibilities and maps.

There are not many places in the world where you can go, collect, and keep one of the world’s most precious gems. A world experience and opportunity awaits you.

*Good luck and happy digging.*

### You beauty!

Once you’ve opened up some “ground” and dug some “wash” you are ready to sieve. Sounds easy but there is some work involved. Fossickers open up a little spot and then spend a few hours “digging” while enjoying the bush. “Gem fever” may occur if you find something good.

But mostly you just dream of what might be in the next bucket and hope you find a beauty!



### RUBYVALE FRIENDLY GROCER

Service with a smile

- Full range of groceries, fresh fruit & veggies
- Fuel, LPG, ice
- Fossicking gear for sale
- Hardware, auto section, souvenirs

Don't bring it with you! Get it right here...

P 07 4985 4190  
Keilambete Rd, Rubyvale (next door to hotel)  
[facebook.com/rubyvalefriendlygrocer](https://www.facebook.com/rubyvalefriendlygrocer)



### FASCINATION GEMS & CRYSTALS

Dave, Anne & Keith Bezett

- Join our tag-along fossicking tours for the ultimate gemfields experience
- Professional gem cutting
- Quality sapphires, settings & jewellery
- Hire equipment
- Gifts & souvenirs

P 07 4985 4675 M 0407 854 676

E [fascgems@bigpond.com](mailto:fascgems@bigpond.com)  
72 Keilambete Rd, Rubyvale  
[sapphiretalk.com](http://sapphiretalk.com)



### RUBYVALE CARAVAN PARK

Centrally located

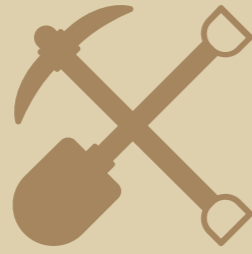
- Powered & unpowered sites
- Swimming pool + Free Wi-Fi
- Self contained ensuite cabins
- Pet friendly budget cabin (small dogs)
- Laundry facilities + well equipped camp kitchen

P 07 4985 4118

E [stay@rubyvalecaravanpark.com.au](mailto:stay@rubyvalecaravanpark.com.au)  
16 Main St, Rubyvale  
[rubyvalecaravanpark.com.au](http://rubyvalecaravanpark.com.au)

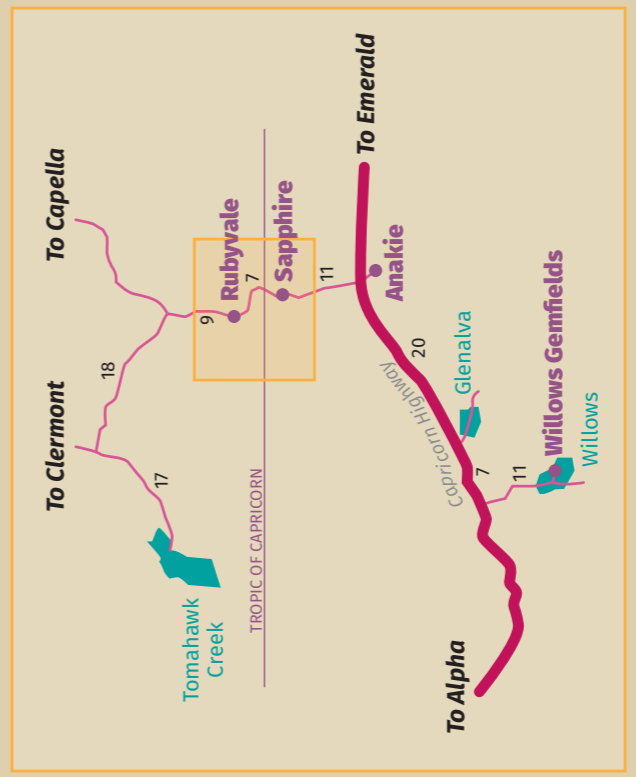
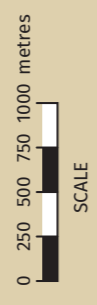


# Central Queensland SAPPHIRE GEMFIELDS



**Map Key**

- Main Road
- Secondary Road
- - - Track
- Creek
- Gully
- Fossicking Area
- Boundary



See Rubyvale, Sapphire & Anakie Town Maps on page 18-19.

## Fossicking Tips

- Sapphires are heavy and are often on the bottom of the wash or around the bigger rocks.
- Ask other fossickers for advice, they are a friendly mob.
- Look for where someone else has dug and carry on. Fossickers have to leave sometime and they might have been an inch away from the big reward.
- Fossicking is a game of luck – enjoy the experience, enjoy the bush.

## FOSSICKING

Five fossicking areas on the Central Queensland Sapphire Gemfields have been set aside for recreation and tourist fossicking.

Fossickers require a fossicking licence in all areas. Your fossicking area allows you to search for and collect fossicking materials using hand tools and for recreation, tourist and educational purposes only.

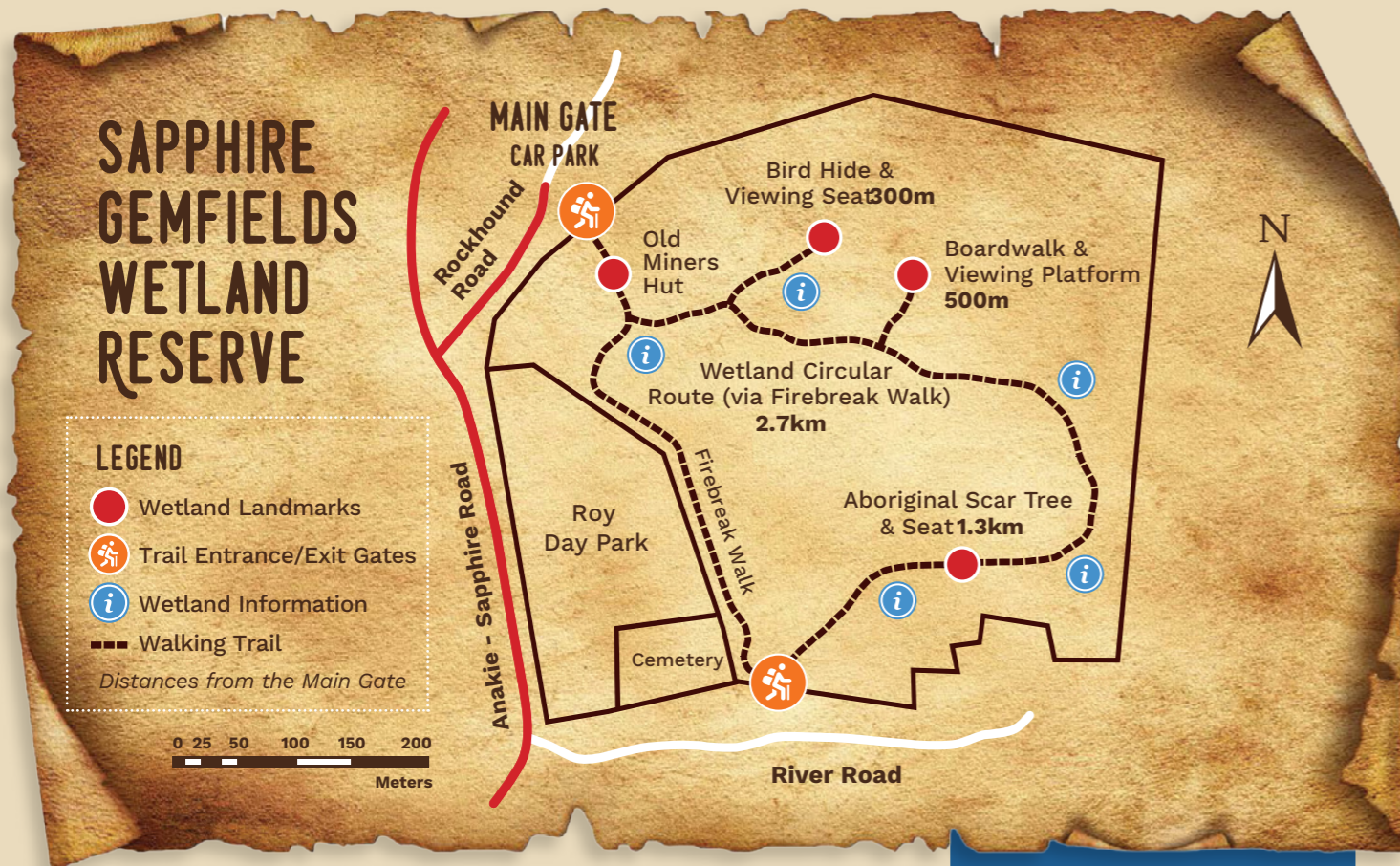
The licences are inexpensive and the full rules and responsibilities are set out and include detailed maps and information.

Licences and the rules are available online at DNR: [www.qld.gov.au/recreation/activities/fossicking](http://www.qld.gov.au/recreation/activities/fossicking)

Available every day on the Sapphire Gemfields at the Blue Gem Caravan Park Sapphire.



# BUSH WALKING



Established in 2012, the Sapphire Gemfields Wetland Reserve protects this sensitive area, providing refuge to native animals and three very special invertebrates — the fairy shrimp, tadpole shrimp and clam shrimp.

Walking trails ranging from a short 300 metre stroll to a 3.8 kilometre trek wind through 95 hectares of Coolibah, Brigalow and Poplar box trees.

The wetland is seasonal. If you visit after rain you will be greeted by an abundance of plant, invertebrate and bird life. When dry, the wetland area provides a tranquil spot to sit and relax while gazing out at the large Coolibah trees and wildlife taking advantage of the changed environment.

**Getting there:** Follow Rockhound Road in Sapphire to the carpark.  
**GPS Co ordinates:** -28.46140, 147.72861

## Exploring the Reserve

- Locally-crafted iron gates lead to an abandoned miner's hut.
- A camouflaged bird hide is perfect for observing and photographing the prolific birdlife, including the elegant brolga.
- The 40 metre boardwalk/viewing platform allows quiet viewing of shrimp, freshwater crabs and inland yabbies in the wet season. The dry season offers the adventurer a variety of plant species and wildlife to view.
- Interpretive signage gives information on the diverse range of fauna and flora. Eastern grey kangaroos are frequent visitors as are native birds, reptiles, snakes and marsupials so keep your eyes open.
- The scar tree is a reminder of the area's indigenous heritage and can be seen from a resting seat along the 2.7 kilometre circular walking track.



## What you need to bring

Make sure that you have plenty of water to drink, sunscreen, light clothing and a hat. A camera is always handy and good comfortable walking shoes are advised. ENJOY!

## NEW ROYAL HOTEL RUBYVALE



P 07 4985 4754 E info@rubyvalehotel.com.au  
Corner of Keilambete & Goanna Flats Rds, Rubyvale  
rubyvalehotel.com.au

**In the middle of everything,  
in the middle of nowhere!**

The New Royal Hotel is a real Country Pub filled with Atmosphere and Local characters.

- Bar - Bottleshop - ATM
- 7 Day Bistro Lunch and Dinner
- Pokies, Ubet and Keno
- Courtesy Bus
- Log Cabins set in Native Gardens



## Sapphire Caravan & Cabin Park

**Darrell & Victoria welcome you to their Tripadvisor Travellers' Choice Award Winning Park**

*More like a retreat than a caravan park – an unforgettable experience. Come and explore the Gemfields and stay in this hidden gem.*

One of the best camp kitchens in Australia, undercover BBQ huts with open fire places. Large, spacious, shady sites with bush views and privacy, and spotless amenity blocks. Beautiful self-contained and budget Billy Boulder cabins that sleep up to five people.

Fossicking park & equipment hire | Pet friendly | Swimming pool  
Concrete pads & drive through sites available | Barista-made coffee



57 Sunrise Road, Sapphire Q 4702 | P: 07 4985 4281 | E: sapphirecaravanpark@gmail.com

www.sapphirecaravanpark.com.au





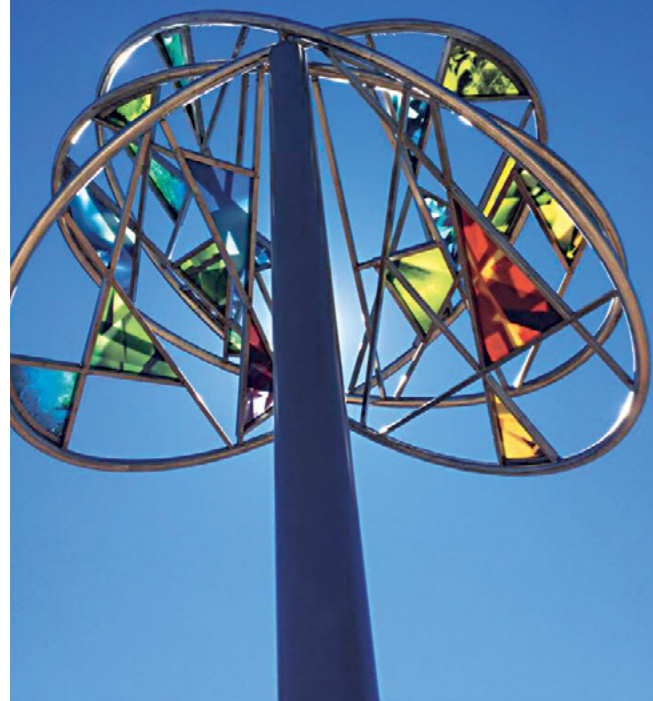
- Sparkling Sapphires
- Curious Characters
- Tales, Tall but True

## TREASURE TRAIL

Join this unique tourism trail. The trail takes you to a series of interpretative nodes and place markers throughout the Sapphire Gemfields area. In each of the townships of Rubyvale, Sapphire, Anakie and Willows Gemfields you will find an interpretative node with a map highlighting the location of over 30 panels and markers. The trail tells a story of the characters, the capers, the history, and the boom-and-bust nature of the sapphire industry. You can engage with technology through the augmented reality features and hunt for hidden geo caches. Grasp this opportunity to obtain a fossicking licence to dig in the designated areas.

The treasure trail also takes you to the Sapphire Gemfields Wetland Reserve. The 14-hectare freshwater wetland has incorporated walking and cycling tracks, seating, a restored historic fossickers' home, a board walk and bird watching hide as well as providing educational and directional signage and viewing areas.

*The towering signature art piece of the interpretative trail is named Sapphire Reflections and symbolises colourful gemstones. The trail is part of the Dig the Tropic geo-tourism adventure.*



### Recent Finds

In March 2018 a man out walking after heavy rain found a 141 carat sapphire just sitting on the surface. It is valued at more than \$30,000. (Pictured)

In mid-2017 a fossicker found a green sapphire at Tomahawk Creek which sold to a gem merchant for \$45,000!



### SAPPHIRE GEM CUTS

We help you find what you are looking for.

- Premium fine quality local hand-mined sapphires & zircons
- Exclusive handcrafted jewellery designs
- Special orders welcome
- Quality jewellery findings

M 0480 398 603  
E info@sapphiregemcuts.com.au  
Keilambete Rd, Rubyvale  
sapphiregemcuts.com.au



### M & M SAPPHIRES

'We mine our sapphires'

- Exquisite sapphire jewellery
- Locally, ethically mined & cut sapphires & zircons
- We can set your gems or choose from our wide range of precious/semiprecious gems
- Faceting supplies & jewellery tools

P 07 4985 4437 M 0433 347 317  
E info@ozsapphires.com.au  
1077 Rubyvale Rd, Sapphire Central  
ozsapphires.com.au



### MCARTHURS JEWELLERS

Only our customers get as much attention as our jewellery!

- Trades Qualified Jeweller
- 40 years' experience in design and manufacturing
- Exclusive Jewellery, all handcrafted

P 07 4985 4654 M 0418 753 350  
E mcarthurs10@bigpond.com  
13 Rockhound Rd, Sapphire  
etsy.com/au/shop/McArthursJewellers



## POLICEMAN'S KNOB

The oldest known volcanic basalt plug on earth is located just a stones-throw from the township of Rubyvale. This incredible natural feature was formed from volcanic eruptions approximately 56 million years ago.

For 4WD vehicles, avid mountain bikers and/or walking enthusiasts, this attraction is accessed via Goanna Flats Road and is less than 5klm from the heart of Rubyvale. It is a rock formation so be sure to wear suitable footwear for the climb.

A natural habitat for our local rock wallabies and an incredible viewing platform to watch birds in flight, Policeman's Knob has views to die for and serenity in spades. A must-see destination while visiting the spectacular Sapphire Gemfields.



PHOTO: Jesse Lindemann & Central Highlands Development Corporation



# CENTRAL HIGHLANDS

Central Highlands Regional Council welcomes you to our part of Queensland.

If you are travelling through the Central Highlands, why not stop over and discover the hidden charms of the region?

We hope you find yourself some treasure at the Gemfields. Whether it's 'fossicking on the fields', sifting through a bag of wash, or just enjoying the winter sun, stay a little longer and explore our unique environment.

Visit the Blackwater Japanese Gardens, created by artists as part of our Sister City relationship.

Catch yourself a red claw at the Bedford Weir and Fairbairn Dam, or enjoy the natural beauties of Carnarvon Gorge and the Blackdown Tablelands.

Don't forget to visit the 25m high Van Gogh Sunflower painting in Emerald along with a host of other public and Indigenous art.

Whether you come to stay or are just passing through, make sure to drop into our local Information Centres for all the local tips and travel advice (see Directory).

*Enjoy yourselves.*



[www.chrc.qld.gov.au](http://www.chrc.qld.gov.au)



## BLUE GEM TOURIST PARK



Situated on the banks of the beautiful river red gum-lined Retreat Creek, where sapphires were first discovered in the region.

Our friendly staff invite you to share your fossicking stories and enjoy fossicking in the park or in the creek at the rear.

- Ensuite & economy cabins
- Vintage railway carriage cabin
- On-site large modern van
- Powered & unpowered sites in garden setting
- Convenience store
- Fuel, gas, ice
- Take away food & icecreams
- Camp kitchen & laundry
- Free WiFi & strong TV reception
- Fossicking park and bucket of wash
- Pet friendly

P 07 4985 4162 E [info@bluegemtouristpark.com.au](mailto:info@bluegemtouristpark.com.au)  
925 Anakie Sapphire Rd, Sapphire  
[bluegemtouristpark.com.au](http://bluegemtouristpark.com.au)



## MINERS HERITAGE WALK-IN MINE



### Visit Australia's largest underground sapphire mine

Your one-stop introduction to the Sapphire Fields – family-owned and established in 1984.

- Open 7 days from 9am
- Fully guided underground mine tour (minimum two people).  
Tours run every hour on the quarter past
- Air-conditioned showroom
- Sapphire Specialists
- Multi Tourism Award Winner
- Underground museum
- Fossick for your own gems
- The Miners Cafe open 8am to 2pm 7 days a week –  
Breakfast and Lunch available + All Day Menu
- Covered picnic area
- Bus & caravan parking



P 07 4985 4444 E [admin@minersheritage.com.au](mailto:admin@minersheritage.com.au)  
97 Heritage Rd, Rubyvale  
[minersheritage.com.au](http://minersheritage.com.au)



## VISITOR INFORMATION CENTRES

**Emerald**  
Central Highlands  
Visitor Centre (VIC)  
Clermont St  
EMERALD Q 4720  
P 07 4982 4142

**Springsure**  
The Wool Shed  
Information Centre  
Gregory Hwy  
SPRINGSURE Q 4722  
P 07 4984 1961

**Blackwater**  
Blackwater International  
Coal Centre  
Capricorn Hwy  
BLACKWATER Q 4717  
P 07 4892 7755

**Capella**  
Capella Agencies  
Peak Downs St  
CAPELLA Q 4723  
P 07 4984 9457

**Duaringa**  
Duaringa Historical &  
Information Centre  
Mackenzie Park  
DUARINGA Q 4712  
P 07 4935 7077



# DIRECTORY

## ACCOMMODATION

### NEW ROYAL HOTEL RUBYVALE

**P** 07 4985 4754  
**E** info@rubyvalehotel.com.au  
Cnr Keilambete & Goanna Flats Rds,  
Rubyvale QLD 4702  
[rubyvalehotel.com.au](http://rubyvalehotel.com.au)

### RUBYVALE GEM GALLERY

**P** 07 49 854 388  
**E** admin@rubyvalegemgallery.com  
Main St, Rubyvale QLD 4702  
[rubyvalegemgallery.com](http://rubyvalegemgallery.com)

### RUBYVALE MOTEL AND HOLIDAY UNITS

**P** 0459 692 313  
**E** rubyvaleholiday@bigpond.com  
35 Heritage Rd, Rubyvale QLD 4702  
[RubyvaleMotel.com.au](http://RubyvaleMotel.com.au)

### SAPPHIRE CARAVAN & CABIN PARK

**P** 07 4985 4281  
**E** sapphirecaravanpark@gmail.com  
57 Sunrise Rd, Sapphire Central QLD 4702  
[sapphirecaravanpark.com.au](http://sapphirecaravanpark.com.au)

### THE BARN ON SUNRISE

**P** 0419 994 953  
**E** thebarnonsunrise@gmail.com  
A sophisticated getaway for 2

## ATTRACTIONS

### GEMFIELDS EVENTS

Gemfields Rocks! – May long weekend  
Gemfields Festival – 2nd week in August  
Mardi Gras – October long weekend  
[gemfieldsevents.com.au](http://gemfieldsevents.com.au)

### MINERS COMMON MUSEUM

Museum & events.  
**P** 0407 760 001  
**E** minerscommon@gmail.com  
1621 Rubyvale Rd, Rubyvale QLD 4702

### MINERS HERITAGE WALK—IN MINE

**P** 07 4985 4444  
**E** admin@minersheritage.com.au  
97 Heritage Rd, Rubyvale QLD 4702  
[minersheritage.com.au](http://minersheritage.com.au)

### RUBYVALE OBSERVATORY

**P** 0459 692 313 (bookings essential)  
**E** rubyvaleholiday@bigpond.com  
35 Heritage Rd, Rubyvale QLD 4702  
[RubyvaleMotel.com.au](http://RubyvaleMotel.com.au)

### SATURDAY MARKETS RUBYVALE

8am–1pm, April – Oct, Rubyvale Flats  
**P** 0428 399 591

### SUNDAY MARKETS SAPPHIRE

Roy Day Park every Sun from 7am, April – Sept  
**P** 0408 301 401

## CARAVAN PARKS

### ANAKIE GEMFIELDS CARAVAN PARK

**P** 07 4985 4142  
7 Richardson St, Anakie QLD 4702  
Powered & unpowered sites, ensuite cabins &  
budget cabins, kiosk, fossicking, pet friendly, gas

### BLUE GEM TOURIST PARK

**P** 07 4985 4162  
**E** info@bluegemtouristpark.com.au  
925 Anakie Sapphire Rd, Sapphire QLD 4702  
[bluegemtouristpark.com.au](http://bluegemtouristpark.com.au)

### RUBYVALE CARAVAN PARK

**P** 07 4985 4118  
**E** stay@rubyvalecaravanpark.com.au  
16 Main St, Rubyvale QLD 4702  
[rubyvalecaravanpark.com.au](http://rubyvalecaravanpark.com.au)

### SAPPHIRE CARAVAN & CABIN PARK

**P** 07 4985 4281  
**E** sapphirecaravanpark@gmail.com  
57 Sunrise Rd, Sapphire Central QLD 4702  
[sapphirecaravanpark.com.au](http://sapphirecaravanpark.com.au)

## CHEMIST

### GEMFIELDS PHARMACY

Mon – Fri, 9am – 4.30pm  
**P** 07 4985 4863  
998 Rubyvale Rd, Sapphire QLD 4702

## COMMUNITY

### ANAKIE STATE SCHOOL

**P** 07 4981 1111 **E** admin@anakiess.eq.edu.au  
Cook St, Anakie QLD 4702

### CHURCH SERVICES

Anglican, 3rd Sunday  
Catholic, 2nd & 4th Sunday  
Ecumenical, 5th Sunday  
Salvation Army, 2nd & 5th Sunday

### GEMFIELDS COMMUNITY SUPPORT ASSN. INC.

Domestic assistance, social support, respite care,  
Meals on Wheels & centre-based care.  
**P** 07 4985 4664 **F** 07 4985 4606  
**E** admin@gemfields.org.au  
PO Box 391, Sapphire QLD 4702

### GEMFIELDS LAPIDARY & CRAFT CLUB INC.

Open Wed & Sat.  
**P** 0474 277 122  
**E** gemfieldslapidary@hotmail.com  
Roy Day Park, Sapphire QLD 4702

### GEMFIELDS LIBRARY

Open Tues 10am–2pm, Thurs 12 noon – 4pm &  
Sat 9am – 12pm.  
**P** 07 4981 0299  
Rubyvale Hall, Rubyvale QLD 4702

### GEMFIELDS MEDICAL CENTRE

Gemfields Outpatients Clinic  
**P** 07 4985 4547 **F** 07 4985 4693  
984 Rubyvale Rd, Sapphire QLD 4702

### GEMFIELDS PLAYGROUP

**P** 0428 377 417  
**E** gemfieldsplaygroup@gmail.com  
Flagon Alley Rd, Sapphire QLD 4702

### GEMMY QUILTERS

**P** 07 4985 4343  
Sapphire Hall, Sapphire QLD 4702

### GEMFIELDS RIDING FOR THE DISABLED

**P** 0408 798 440  
**E** sapphire.rda@gmail.com  
Roy Day Park, Sapphire QLD 4702

### OPPORTUNITY SHOP

Salvation Army, Angelo's SAPPHIRE  
**P** 07 4985 4690

### RETREAT CREEK CAMPDRAFT ASSOC

**P** 0428 347 408  
**E** rcca\_secretary@outlook.com

### RSL GEMFIELDS INC.

**P** 07 4985 4588  
**E** secretary@gemfieldsrsl.com.au  
3 Clinic Rd, Sapphire QLD 4702  
(behind Post Office)

### RUBYVALE POST OFFICE

**P** 07 4985 4130  
Main St, Rubyvale QLD 4702

### RUBYVALE PROGRESS ASSOC

**P** 0472 564 141  
**E** rubyvaleprogressassoc@outlook.com

### SAPPHIRE POST OFFICE

**P/F** 07 4985 4140  
988 Rubyvale Rd, Sapphire QLD 4702

### TRANSFER/REFUSE STATION

OPEN Tues, Fri & Sun 8am – 12pm  
The Tip, Rubyvale & Sapphire

## CONVENIENCE STORES

### BLUE GEM TOURIST PARK

**P** 07 4985 4162  
**E** info@bluegemtouristpark.com.au  
925 Anakie Sapphire Rd, Sapphire QLD 4702  
[bluegemtouristpark.com.au](http://bluegemtouristpark.com.au)

### RUBYVALE FRIENDLY GROCER

**P** 07 4985 4190  
Keilambete Rd, Rubyvale QLD 4702  
Right next door to the hotel  
[facebook.com/rubyvalefriendlygrocer](http://facebook.com/rubyvalefriendlygrocer)

## EATERIES/TAKEAWAYS

### BLUE GEM TOURIST PARK

**P** 07 4985 4162  
**E** info@bluegemtouristpark.com.au  
925 Anakie Sapphire Rd, Sapphire QLD 4702  
[bluegemtouristpark.com.au](http://bluegemtouristpark.com.au)

### BREWSTAR COFFEE CO

**P** 0427 447 244  
**E** brewstarcoffeecq@mail.com  
Cnr Capricorn Highway & Anakie Sapphire Rd,  
The Gemfields QLD 4702 – Open M–F from 6am

### MINERS HERITAGE WALK—IN MINE

**P** 07 4985 4444  
**E** admin@minersheritage.com.au  
97 Heritage Rd, Rubyvale QLD 4702  
[minersheritage.com.au](http://minersheritage.com.au)

### MUGGACHINOS

**P** 0407 861 048  
**E** gunterkuenz@bigpond.com  
24 Keilambete Rd, Rubyvale QLD 4702  
[muggachinos.business.site](http://muggachinos.business.site)

### NEW ROYAL HOTEL RUBYVALE

**P** 07 4985 4754  
**E** info@rubyvalehotel.com.au  
Cnr Keilambete & Goanna Flats Rds,  
Rubyvale QLD 4702  
[rubyvalehotel.com.au](http://rubyvalehotel.com.au)

### PATS SAPPHIRE CENTRAL

**P** 07 4985 4544  
**E** info@patsapphirecentral.com.au  
1056 Rubyvale Rd, Sapphire QLD 4702  
[Patsapphirecentral.com.au](http://Patsapphirecentral.com.au)

## FOSSICKING

### BOBBY DAZZLER MINE RUBYVALE

**P** 0439 697 023  
**E** bobbydazzler.rubyvale@gmail.com  
1688 Rubyvale Rd, Rubyvale QLD 4702  
**FB:** [Bobby Dazzler Mine Rubyvale](https://www.facebook.com/BobbyDazzlerMineRubyvale)

### FASCINATION GEMS & CRYSTALS

**P** 07 4985 4675 **M** 0407 854 676  
**E** fascgems@bigpond.com  
72 Keilambete Rd, Rubyvale QLD 4702  
[sapphirestalk.com](http://sapphirestalk.com)

### LADY LUCK FOSSICKING TOURS

**P** 0456 433 719  
**E** fossickingtours@gmail.com  
[facebook.com/LadyLuckFossickingTours](https://www.facebook.com/LadyLuckFossickingTours)

### MINERS HERITAGE WALK—IN MINE

**P** 07 4985 4444  
**E** admin@minersheritage.com.au  
97 Heritage Rd, Rubyvale QLD 4702  
[minersheritage.com.au](http://minersheritage.com.au)

### PATS SAPPHIRE CENTRAL

**P** 07 4985 4544  
**E** info@patsapphirecentral.com.au  
1056 Rubyvale Rd, Sapphire QLD 4702  
[patsapphirecentral.com.au](http://patsapphirecentral.com.au)

## GEMS, JEWELLERY & SAPPHIRES

### COOLAMON MINING SAPPHIRE SHOWCASE

**P** 0407 881 551  
**E** coolamon.showcase@yahoo.com  
1052 Rubyvale Rd, Sapphire QLD 4702  
**FB:** [Coolamon Mining Sapphires](https://www.facebook.com/CoolamonMiningSapphires)

### FASCINATION GEMS & CRYSTALS

**P** 07 4985 4675 **M** 0407 854 676  
**E** fascgems@bigpond.com  
72 Keilambete Rd, Rubyvale QLD 4702  
[sapphirestalk.com](http://sapphirestalk.com)

### GEMVAL (GEMSTONES & JEWELLERY VALUATIONS)

**P** 0408 665 896 – Janet (by appt. only)  
**E** Gemval.j@gmail.com  
Gemmologist/Valuer – FGAA

### MCARTHURS JEWELLERS

**P** 07 4985 4654 **M** 0418 753 350  
**E** mcarthurs10@bigpond.com  
13 Rockhound Rd, Sapphire QLD 4702  
[etsy.com/au/shop/McArthursJewellers](http://etsy.com/au/shop/McArthursJewellers)

### M & M SAPPHIRES

**P** 07 4985 4437 **M** 0433 347 317  
**E** info@ozsapphires.com.au  
1077 Rubyvale Rd, Sapphire Central QLD 4702  
[ozsapphires.com.au](http://ozsapphires.com.au)

### MINERS HERITAGE WALK—IN MINE

**P** 07 4985 4444  
**E** admin@minersheritage.com.au  
97 Heritage Rd, Rubyvale QLD 4702  
[minersheritage.com.au](http://minersheritage.com.au)

### PATS SAPPHIRE CENTRAL

**P** 07 4985 4544  
**E** info@patsapphirecentral.com.au  
1056 Rubyvale Rd, Sapphire QLD 4702  
[Patsapphirecentral.com.au](http://Patsapphirecentral.com.au)

### RICHARDSON SAPPHIRES

**P** 0409 761 845  
**E** rgrichardson@bigpond.com  
Rough & Cut Sapphires & Jewellery

### RUBYVALE GEM GALLERY

**P** 07 49 854 388  
**E** admin@rubyvalegemgallery.com  
Main St, Rubyvale QLD 4702  
[rubyvalegemgallery.com](http://rubyvalegemgallery.com)

### SAPPHIRE GEM CUTS

**P** 0480 398 603  
**E** info@sapphiregemcuts.com.au  
Keilambete Rd, Rubyvale QLD 4702  
[sapphiregemcuts.com.au](http://sapphiregemcuts.com.au)

### TAYLORS FINE SAPPHIRES

**M** 0459 692 313  
**E** rubyvaleholiday@bigpond.com  
35 Heritage Rd, Rubyvale QLD 4702  
[TaylorsFineSapphires.com.au](http://TaylorsFineSapphires.com.au)

## HEALTH & WELLBEING

### GEMFIELDS MASSAGE THERAPIES

**P** 0437 921 970  
**E** gemfieldsmassage@yahoo.com  
3 Steele St, Rubyvale QLD 4702  
[gemfieldsmassage.net](http://gemfieldsmassage.net)

### LITTLE GEM YOGA – KELLY CORBISHLEY

**P** 0429 473 314  
**E** kelly@littlegemyoga.com.au  
Emerald & Sapphire  
[littlegemyoga.com.au](http://littlegemyoga.com.au)

### LIVING BALANCE CENTRE/JOANNE INTUITIVE

**P** 0421 566 616  
**E** jo@livingbalancecentre.com.au  
[joanneintuitive.com](http://joanneintuitive.com)

### SAPPHIRE HEALING CENTRE

**P** 0466 156 291  
**E** jennifernduenzl@gmail.com  
977 Rubyvale Rd, Sapphire QLD 4702  
Healing Services and Wellness Products

## HOTELS

### NEW ROYAL HOTEL RUBYVALE

**P** 07 4985 4754  
**E** info@rubyvalehotel.com.au  
Cnr Keilambete & Goanna Flats Rds,  
Rubyvale QLD 4702  
[rubyvalehotel.com.au](http://rubyvalehotel.com.au)

## LAPIDARY SUPPLIES

### RUBYVALE CUT AND SLICE

Lapidary & jewellery tools  
**P** 07 4985 4003 **E** info@cutandslice.com.au  
[www.cutandslice.com.au](http://www.cutandslice.com.au)  
25 Keilambete Rd, Rubyvale QLD 4702

## MOTELS

### RUBYVALE MOTEL AND HOLIDAY UNITS

**P** 0459 692 313  
**E** rubyvaleholiday@bigpond.com  
35 Heritage Rd, Rubyvale QLD 4702  
[RubyvaleMotel.com.au](http://RubyvaleMotel.com.au)

## TRADES & SERVICES

### ELLEN'S HAIRDRESSING

**P** 0428 603 333  
Quality haircuts, appointments only,  
all hairdressing available

### EMBROIDERY EXPRESS 2 U

**P** 0458 771 153  
**E** embroideryexpress2u@gmail.com  
28 Old Rubyvale Rd, Rubyvale QLD 4702  
[facebook.com/RoseEmbroideryExpress2U](http://facebook.com/RoseEmbroideryExpress2U)

### GEMFIELDS BOBCAT & TIPPER HIRE

**P** 0429 803 381  
**E** nilssoncontractors@hotmail.com  
4 Willishagen Walk, Rubyvale QLD 4702

### GEMFIELDS ELECTRICAL

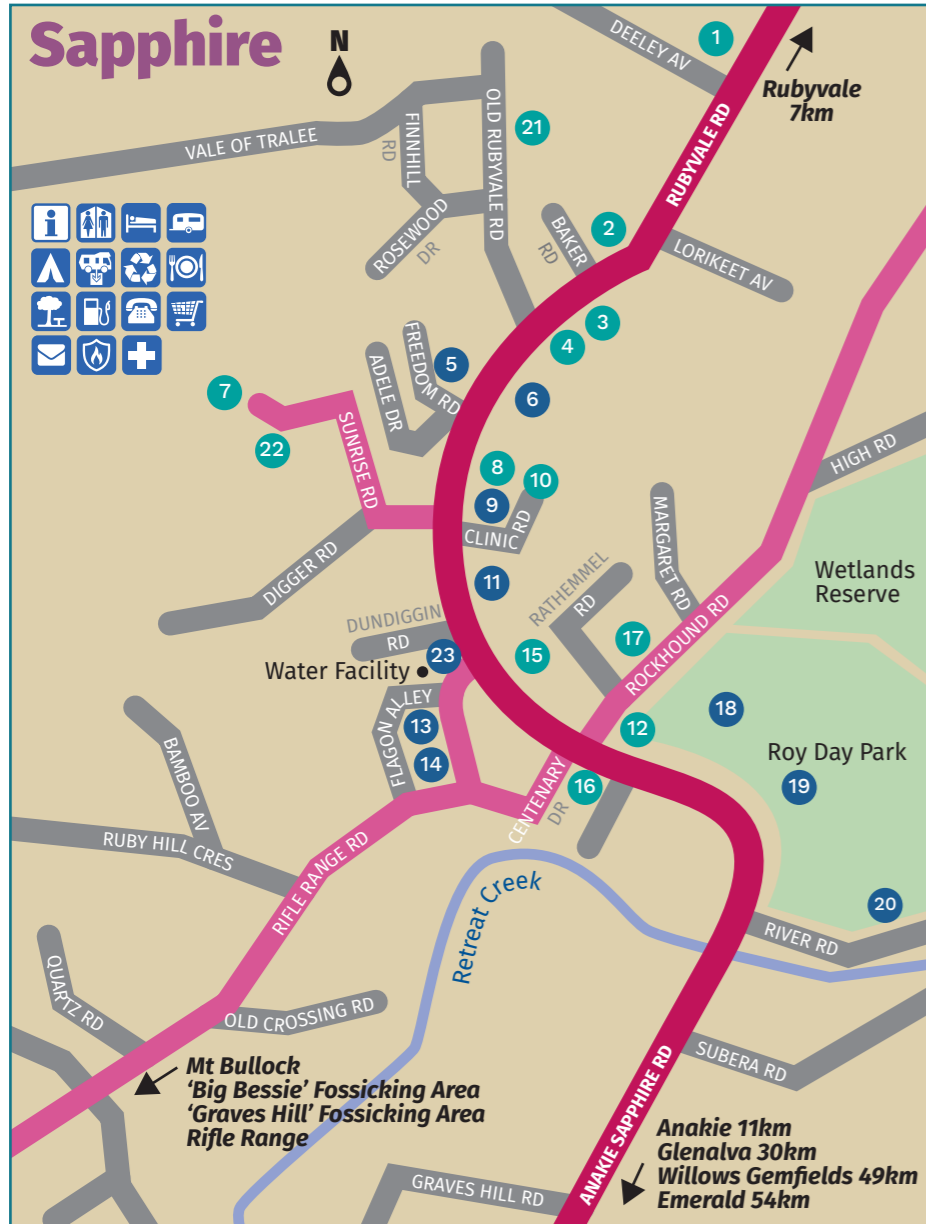
**P** 0419 252 036  
All electrical work, aircon installations

### LAUBLI ENGINEERING

**P** 07 4985 4344  
**E** rudolph.laubli@bigpond.com  
19 Farm Rd, Rubyvale QLD 4702  
Mining Equipment & Repairs & Laps Done



# TOWN MAPS

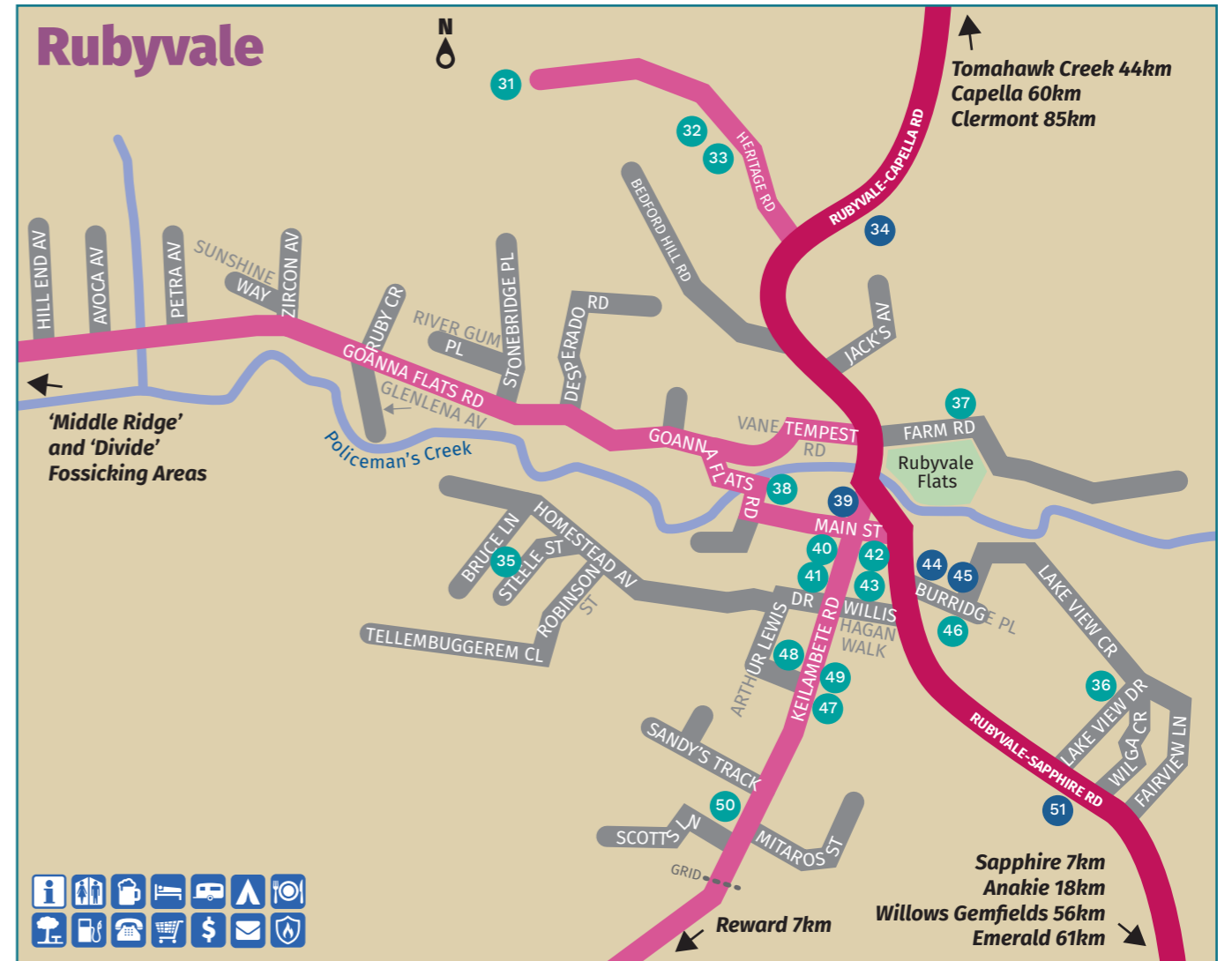


## SAPPHIRE PLACES OF INTEREST

- 1 Dump point midway between Sapphire + Rubyvale
- 2 M & M Sapphires
- 3 Pat's Sapphire Central
- 4 Coolamon Mining Sapphire Showcase
- 5 Gemfields Multi Purpose Centre
- 6 Ambulance Station
- 7 Sapphire Caravan Park
- 8 Chemist / Pharmacist
- 9 Post Office
- 10 Gemfields RSL
- 11 Medical Health Clinic
- 12 Yoga in the Park
- 13 Public Toilets
- 14 Swimming Pool
- 15 Sapphire Hall
- 16 Blue Gem Tourist Park
- 17 McArthurs Jewellers
- 18 Gemfields Lapidary Club
- 19 Football Grounds
- 20 Sapphire Cemetery
- 21 Embroidery Express
- 22 The Barn on Sunrise
- 23 Sapphire Healing Centre

## ANAKIE PLACES OF INTEREST

- 21 Sapphire Gemfields Sculpture
- 22 Cemetery
- 23 Anake Gemfields Caravan Park
- 24 Richardson Sapphires
- 25 Public Toilets
- 26 Anake State School
- 27 Anake Police Station
- 28 Anake Railway Station
- 29 Brewstar Coffee



## RUBYVALE PLACES OF INTEREST

- |                                   |                                      |                                |
|-----------------------------------|--------------------------------------|--------------------------------|
| 31 Miners Heritage Walk in Mine   | 38 Rubyvale Caravan Park             | 45 Hall & Library              |
| 32 Rubyvale Motel & Holiday Units | 39 Rubyvale Post Office              | 46 Bobby Dazzler Mine          |
| 33 Taylors Fine Sapphires         | 40 The New Royal Hotel               | 47 Sapphire Gem Cuts           |
| 34 Rubyvale Cemetery              | 41 Rubyvale Friendly Grocer          | 48 Muggachinos Coffee Shop     |
| 35 Gemfields Massage Therapies    | 42 Rubyvale Gem Gallery              | 49 Rubyvale Cut and Slice      |
| 36 Ellen's Hairdressing           | 43 Rubyvale Gem Gallery Holiday Apts | 50 Fascination Gems & Crystals |
| 37 Laubli Engineering             | 44 Public Toilets                    | 51 Miners Historical Centre    |

## Town Legend

- |              |  |                  |                                    |   |
|--------------|--|------------------|------------------------------------|---|
| Information  | Public Toilets   | Outback Pub      | Motel                              | Post Office                             |
| Food/Meals   | Picnic Area  | Public Telephone | Basic Grocery Items                | Fuel Stop (Willow Gemfields - ULP ONLY) |
| Caravan Park | Camping (No camping in 1.5km of Rubyvale or Sapphire Post Offices) | Transfer Station | Caravan/Motorhome Waste Dump Point | Place of Interest                       |
| ATM Facility | Police Station   | Fire Brigade     | Ambulance/Medical Centre           |   |



# GEMFIELDS EVENTS

PROUDLY PRESENTS



# GEMFIELDS ROCKS!

MAY LONG WEEKEND

GEMFIELDS  
**FESTIVAL**  
AUGUST

SECOND WEEK  
IN AUGUST

MARDI GRAS

OCTOBER  
LONG WEEKEND

[gemfieldsevents.com.au](http://gemfieldsevents.com.au)

